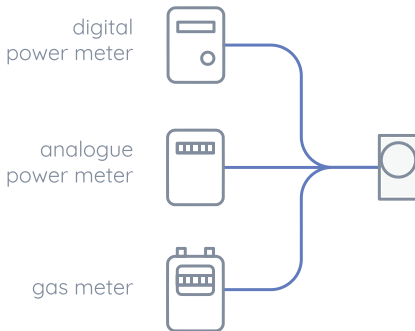
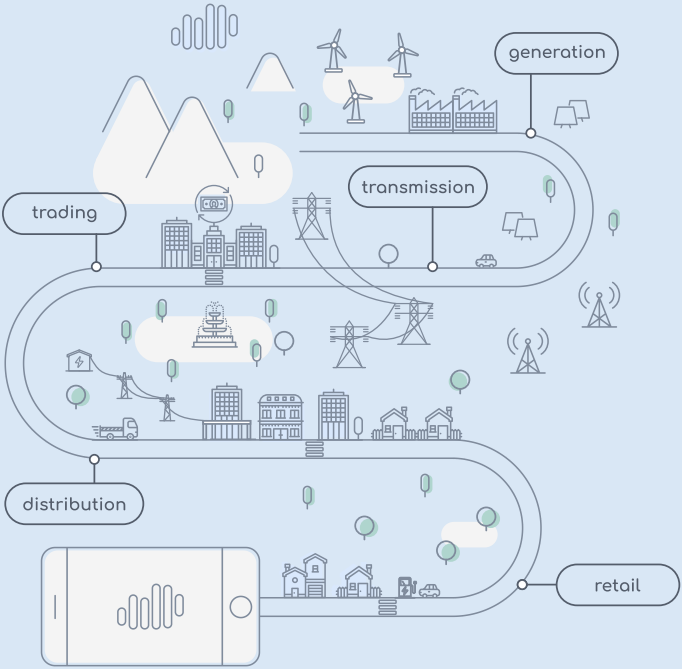


meters

LERTA metering device allows to read consumption data from existing non-smart meters thanks to optical interface and magnetic sensor. Electronic and analog electricity, gas and water meters are supported. LERTA Meter enables energy retailers to get energy consumption data by bypassing DSO's systems and infrastructure and distributors to roll-out AMI without expensive operation of smart meters deployment.





 **lerta**

www.lerta.energy